

Osteopenia and decreased bone formation in osteonectin-deficient mice

A.M. Delany, ... , R. Baron, E. Canalis

J Clin Invest. 2000;105(9):1325-1325. <https://doi.org/10.1172/JCI7039C1>.

Corrigendum

During preparation of this manuscript for publication, an error in Figure 5 was introduced. The correct version, accompanied by the legend, appears below. Figure 5 Trabecular bone-formation rate in tibiae of control (+/+) and osteonectin-null (-/-) mice. In vivo dual calcein labeling allows an estimate of bone-formation rate, which considers the distance between 2 fluorescent labels. Representative data from 11-week-old control (a) and osteonectin-null (b) mice are shown. Bars show mean \pm SEM (n \geq 4). AP <0.01 between control and mutant mice, as determined by 2-way ANOVA.

Find the latest version:

<https://jci.me/7039C1/pdf>

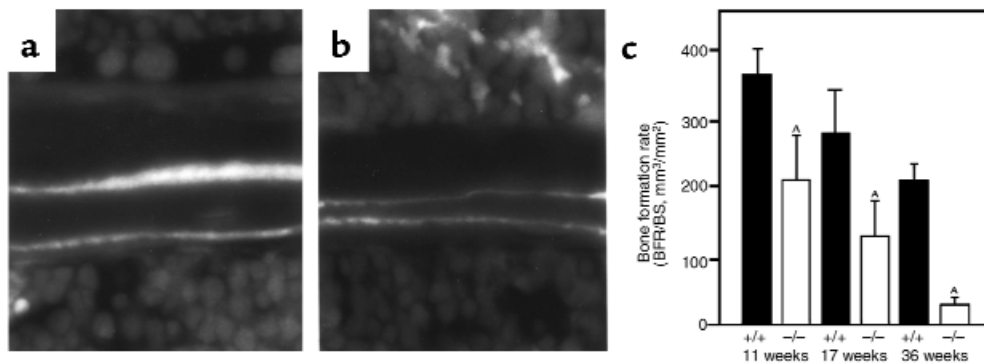


Osteopenia and decreased bone formation in osteonectin-deficient mice

A.M. Delany, M. Amling, M. Priemel, C. Howe, R. Baron, and E. Canalis

J. Clin. Invest. **105**:915-923 (2000).

During preparation of this manuscript for publication, an error in Figure 5 was introduced. The correct version, accompanied by the legend, appears below.

**Figure 5**

Trabecular bone-formation rate in tibiae of control (+/+) and osteonectin-null (-/-) mice. In vivo dual calcein labeling allows an estimate of bone-formation rate, which considers the distance between 2 fluorescent labels. Representative data from 11-week-old control (a) and osteonectin-null (b) mice are shown. Bars show mean \pm SEM ($n \geq 4$). $^{*}P < 0.01$ between control and mutant mice, as determined by 2-way ANOVA.